



YOUR COMMUNITY FOUNDATION COMMITTEE

GRAND CENTRAL PARK



“Your Community Foundation Committee,” or what The Johnson Development Corp (JDC) calls **YCFC**, for short, helps give residents the pride and comfort in knowing the unsurpassed quality expected from each JDC community will be maintained, sustained, and even enhanced throughout the years.

How does YCFC work?

A foundation fee is collected at each closing as a percentage of the sales price of each home. These funds are then set aside for such purposes as the Community Association Board, upon recommendation of **YCFC**, deems beneficial to the community. Each time a property is re-sold, the fee is once again collected. Hence, the reserve, which always stays within the community, perpetuates for the life of the development.

Who Benefits from YCFC?

YCFC partners with the Community Association Board to help select projects including, but not limited to:

- Amenities
- Community events, clubs, groups, and sports
- Health and wellness
- Technology
- Education
- The environment
- Enhancements and improvements to infrastructure within the development

How is the money spent?

The foundation committee works in concert with the Community Association Board to review grant applications and select projects and programs believed to best reflect the needs and interests of the community. In addition, foundation fees can fund community artwork, holiday decorations, and special events.



Examples of YCFC working for



Art Makes Us Smile

The “Four People” sculpture which can represent parents and children or just four friends is a hallmark in Johnson Development communities. **Grand Central Park** is no different. The bronze sculpture which helps remind us that we are all part of a unique community will soon be installed in our community.



Henry’s Home

A horse sanctuary in our backyard! At Henry’s Home, donated and rescued horses provide equine-assisted therapy at no cost to veterans, first responders, and their families. Foundation fees have helped Henry’s Home purchase much needed program equipment and supplies.



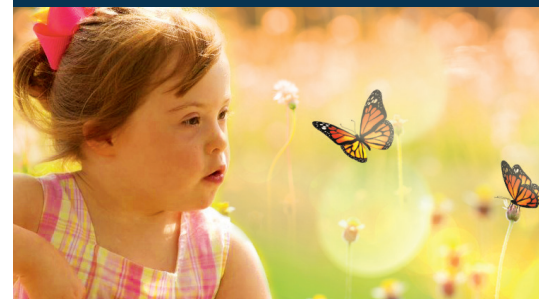
Helping Teachers Get Back in the Classroom

Foundation fees are making it possible for Conroe Independent School District teachers to advance their training and to learn new skills. Contributions to the CISD Education Foundation help fund annual continuing education scholarships for teachers who serve **Grand Central Park** students.



Children’s Catastrophic Fund

Residents of **Grand Central Park** take pride and satisfaction knowing that their community supports families who are challenged with the financial stress of caring for a child with a catastrophic illness or catastrophic congenital/genetic disorder. The Children’s Catastrophic fund (CCF) has been established to help ease financial pressures through grants to deserving families. The fund, supported by foundation fees, says, “We are here for you, and we care!”



Other JDC communities where foundation fees are making a difference!



Impressive Track Record

Since January 1, 2000, over \$7,000,000 has been invested back into Sienna by its Community Services Foundation. The funds have enhanced community services and resources by investing in Education, Technology, Health & Wellness, the Environment and such Community Events as the Spring Fling, July 4th Fireworks Spectacular, the Spring and Fall Concert Series, Outdoor Movies, Camp Outs, Bingo Parties and Road Trips. Additionally, the Foundation has upgraded ballfields and playground equipment, replaced recreation amenities, provided handicap accessible swings in parks, installed bronze art sculptures throughout the community and has funded a Children’s Catastrophic Fund to assist residents dealing with debilitating health issues. It’s an impressive track record that has enhanced the quality of life for all Sienna residents without increasing Homeowner dues or requiring special assessments to fund long term maintenance requirements.